



ATTACCO RAPIDO UNIVERSALE EURO SAFE - VERSIONE IDRAULICA

EURO SAFE UNIVERSAL QUICK COUPLER - HYDRAULIC VERSION



COUPLEUR UNIVERSEL EURO SAFE - VERSION HYDRAULIQUE

REVERSIBLE



Nota / Note

Specifiche idrauliche a pg. 288 - 293
Hydraulic specifications at pg. 288 - 293
Spécifications hydrauliques voir pg. 288 - 293

Versione idraulica Hydraulic version Version hydraulique							
Modello / Model / Modèle	Code	≈ kg	Perno / Pin / Axe Ø mm	Interasse / Interaxis Entraxe es: mm (min/max)	€	Gancio / Hook / Crochet 5 - 10 t	Anello / Ring / Manille 9,5 t
EURO SAFE 60 t 11 - 16	10Z060	175	60	330 ÷ 379	-	-	-
EURO SAFE 65 t 11 - 16	10Z065	180	65	355 ÷ 394 / 395 ÷ 445	-	-	-
EURO SAFE 70 t 12 - 20	10Z070	270	70	370 ÷ 429 / 430 ÷ 500	-	-	-
EURO SAFE 80 t 16 - 28	10Z080	320	80	400 ÷ 459 / 460 ÷ 530	-	-	-
EURO SAFE 90 t 23 - 35	10Z090	400	90	460 ÷ 514 / 515 ÷ 580	-	-	-
EURO SAFE 100 t 28 - 50	10Z100	640	100	500 ÷ 559 / 560 ÷ 630	-	-	-
EURO SAFE 110 t 35 - 50	10Z110	730	110	535 ÷ 600	-	-	-
EURO SAFE 120 t 45 - 75	10Z120	780	120	580 ÷ 645	-	-	-



Coppia perni per aggancio benna compresa / Pair of pins for bucket coupling included / Jeu d'axes pour accrochage godet inclus
Coppia perni supplementare a pg. 57 / Extra pair of pins at pg. 57 / Jeu d'axes supplementaire voir pg. 57



ATTACCO RAPIDO UNIVERSALE EURO SAFE - VERSIONE MECCANICA
EURO SAFE UNIVERSAL QUICK COUPLER - MECHANICAL VERSION
COUPLEUR UNIVERSEL EURO SAFE - VERSION MÈCANIQUE À VIS

REVERSIBLE



Versione meccanica Mechanical version Version mécanique							
Modello / Model / Modèle	Code	≈ kg	Perno / Pin / Axe Ø mm	Interasse / Interaxis Entraxe es: mm (min/max)	€	Gancio / Hook / Crochet 5 - 10 t	Anello / Ring / Manille 9,5 t
EURO SAFE 60 t 11-16	10W060	175	60	330 ÷ 380	-	-	-
EURO SAFE 65 t 11-16	10W065	180	65	355 ÷ 394 / 395 ÷ 445	-	-	-
EURO SAFE 70 t 12-20	10W070	270	70	370 ÷ 429 / 430 ÷ 500	-	-	-
EURO SAFE 80 t 16-28	10W080	320	80	400 ÷ 459 / 460 ÷ 530	-	-	-
EURO SAFE 90 t 23-35	10W090	400	90	460 ÷ 514 / 515 ÷ 580	-	-	-

Coppia perni per aggancio benna compresa / Pair of pins for bucket coupling included / Jeu d'axes pour accrochage godet inclus
Coppia perni supplementare a pg. 57 / Extra pair of pins at pg. 57 / Jeu d'axes supplementaire voir pg. 57

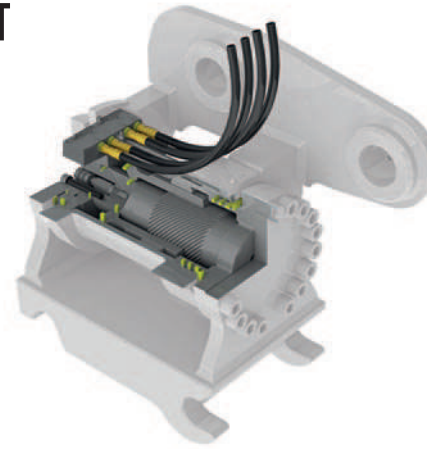


ATTACCO RAPIDO UNIVERSALE EURO SAFE - POWERTILT

EURO SAFE UNIVERSAL QUICK COUPLER - POWERTILT



COUPLEUR UNIVERSEL EURO SAFE - POWERTILT

REVERSIBLE



Nota / Note

Specifiche idrauliche a pg. 288 - 293
 Hydraulic specifications at pg. 288 - 293
 Spécifications hydrauliques voir pg. 288 - 293

Versione idraulica Hydraulic version Version hydraulique									
Modello / Model / Modèle	Code	Perno / Pin / Axe Ø mm	Powertilt model	t Max	Total	≈ kg	€	Gancio / Hook Crochet 5 - 10 t	Anello / Ring Manille 9,5 t
EUROSAFE 60	10DW60	60	PTA 180	11,0 ÷ 18,0	120°	430	-	-	-
EUROSAFE 60	10DZ60	60	PTA 240	18,0 ÷ 24,0	120°	530	-	-	-
EUROSAFE 65	10DW65	65	PTA 180	11,0 ÷ 18,0	120°	435	-	-	-
EUROSAFE 65	10DZ65	65	PTA 240	18,0 ÷ 24,0	120°	535	-	-	-
EUROSAFE 70	10DW70	70	PTA 180	11,0 ÷ 18,0	120°	525	-	-	-
EUROSAFE 70	10DZ70	70	PTA 240	18,0 ÷ 24,0	120°	630	-	-	-
EUROSAFE 70	10DX70	70	PTA 300	24,0 ÷ 32,0	120°	730	-	-	-
EUROSAFE 80	10DW80	80	PTA 180	11,0 ÷ 18,0	120°	580	-	-	-
EUROSAFE 80	10DZ80	80	PTA 240	18,0 ÷ 24,0	120°	680	-	-	-
EUROSAFE 80	10DX80	80	PTA 300	24,0 ÷ 32,0	120°	780	-	-	-
EUROSAFE 90	10DZ90	90	PTA 240	18,0 ÷ 24,0	120°	760	-	-	-
EUROSAFE 90	10DX90	90	PTA 300	24,0 ÷ 32,0	120°	860	-	-	-
EUROSAFE 99	10DX99	100	PTA 300	24,0 ÷ 32,0	120°	1140	-	-	-

Coppia perni per aggancio benna compresa / Pair of pins for bucket coupling included / Jeu d'axes pour accrochage godet inclus
 Coppia perni supplementare a pg. 57 / Extra pair of pins at pg. 57 / Jeu d'axes supplementaire voir pg. 57



ATTACCO RAPIDO EUROSAFE SW-LIEBHERR


EUROSAFE SW-LIEBHERR QUICK COUPLING


ATTACHE RAPIDE EUROSAFE SW-LIEBHERR




Nota / Note

Specifiche idrauliche a pg. 288 - 293
 Hydraulic specifications at pg. 288 - 293
 Spécifications hydrauliques voir pg. 288 - 293

Versione meccanica Mechanical version Version mécanique						
Modello / Model / Modèle	Code	Perno / Pin / Axe Ø mm	≈ kg	€	Gancio / Hook / Crochet	
EURO SAFE SW 33	10W060LIA1	60	210	-	t 5,0	-
EURO SAFE SW 48	10W070LIA2	70	320	-	t 10,0	-

Versione idraulica Hydraulic version Version hydraulique						
Modello / Model / Modèle	Code	Perno / Pin / Axe Ø mm	≈ kg	€	Gancio / Hook / Crochet	
EURO SAFE SW 33	10Z060LIA1	60	210	-	t 5,0	-
EURO SAFE SW 48	10Z070LIA2	70	320	-	t 10,0	-
EURO SAFE SW 66	10Z080LIA3	80	550	-	t 12,5	-

1 perno per aggancio benna compreso / 1 pin for bucket coupling included / 1 axe pour accrochage godet inclus

Perno supplementare Extra pin Axe supplémentaire		Ø 60 mm	Ø 70 mm	Ø 80 mm
		-	-	-

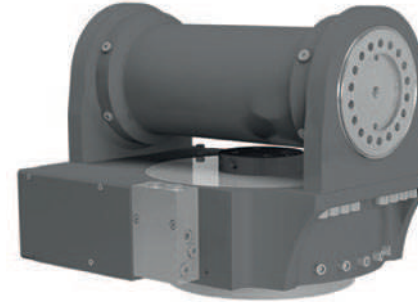
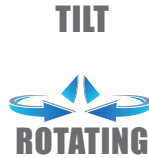


ATTACCO RAPIDO UNIVERSALE EURO SAFE - TILT ROTATOR

EURO SAFE UNIVERSAL QUICK COUPLER - TILT ROTATOR






COUPLEUR EURO SAFE - TILT ROTATOR

NEVERSTOP



Nota / Note

Specifiche idrauliche a pg. 288 - 293
 Hydraulic specifications at pg. 288 - 293
 Spécifications hydrauliques voir pg. 288 - 293

Versione idraulica Hydraulic version Version hydraulique										
	Code	Perno/Pin/Axe Ø mm	Tilt Rotator model	t Max		 Total	 ≈ kg	€	Gancio/Hook Crochet 5 - 10 t	Anello/Ring Manille 9,5 t
EUROSAFE 60	10TL60	60	TR 120	8,0 ÷ 12,0	360°	110°	440	-	-	-
EUROSAFE 60	10TN60	60	TR 150	11,0 ÷ 15,0	360°	110°	520	-	-	-
EUROSAFE 65	10TL65	65	TR 120	8,0 ÷ 12,0	360°	110°	455	-	-	-
EUROSAFE 65	10TN65	65	TR 150	11,0 ÷ 15,0	360°	110°	535	-	-	-
EUROSAFE 70	10TN70	70	TR 150	11,0 ÷ 15,0	360°	110°	620	-	-	-
EUROSAFE 70	10TP70	70	TR 200	14,0 ÷ 20,0	360°	110°	645	-	-	-
EUROSAFE 70	10TR70	70	TR 270	19,0 ÷ 27,0	360°	110°	825	-	-	-
EUROSAFE 80	10TP80	80	TR 200	14,0 ÷ 20,0	360°	110°	659	-	-	-
EUROSAFE 80	10TR80	80	TR 270	19,0 ÷ 27,0	360°	110°	875	-	-	-
EUROSAFE 90	10TR90	90	TR 270	19,0 ÷ 27,0	360°	110°	955	-	-	-

Coppia perni per aggancio benna compresa / Pair of pins for bucket coupling included / Jeu d'axes pour accrochage godet inclus
 Coppia perni supplementare a pg. 57 / Extra pair of pins at pg. 57 / Jeu d'axes supplementaire voir pg. 57