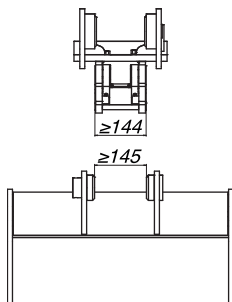






ATTACCO RAPIDO UNIVERSALE EUROSAFE MINI - VERSIONE IDRAULICA
EUROSAFE MINI UNIVERSAL QUICK COUPLER - HYDRAULIC VERSION
COUPLEUR EUROSAFE MINI - VERSION HYDRAULIQUE

REVERSIBLE



Versione idraulica Hydraulic Version Version hydraulique	* Solamente per larghezza attacchi benna ≥ 145 mm Only for bucket dipper width ≥ 145 mm Seulement pour largeur attaches godet ≥ 145 mm						
Modello / Model / Modèle	Code	≈ kg	Perno / Pin / Axe Ø mm	Interasse / Interaxis / Entraxe mm (min/max)	€	Gancio / Hook Crochet 3 - 5 t	Anello / Ring Manille 3,25 t
EURO SAFE 40 *	10Z040	65	40	170÷204 / 205÷239 / 240÷274 275÷309 / 310÷350	-	-	-
EURO SAFE 45 *	10Z045	80	45	220÷254 / 255÷289 / 290÷324 325÷359 / 360÷400	-	-	-
EURO SAFE 50	10Z050	85	50	235÷269 / 270÷304 / 305÷339 340÷380	-	-	-
EURO SAFE 55	10Z055	90	55	275 ÷ 315	-	-	-
EURO SAFE MIDI 60	10ZM60	95	60	275 ÷ 315	-	-	-

Coppia perni per aggancio benna compresa / Pair of pins for bucket coupling included / Jeu d'axes pour accrochage godet inclus
 Coppia perni supplementare a pg. 57 / Extra pair of pins at pg. 57 / Jeu d'axes supplementaire voir pg. 57

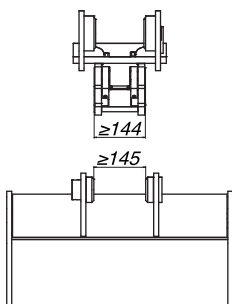




ATTACCO RAPIDO UNIVERSALE EUROSAFE MINI - VERSIONE MECCANICA

EUROSAFE MINI UNIVERSAL QUICK COUPLER - MECHANICAL VERSION

COUPLEUR EUROSAFE MINI - VERSION MÉCANIQUE

REVERSIBLE



Versione meccanica Mechanical Version Version mécanique	* Solamente per larghezza attacchi benna ≥ 145 mm Only for bucket dipper width ≥ 145 mm Seulement pour largeur attaches godet ≥ 145 mm						
Modello / Model / Modèle	Code	≈ kg	Perno / Pin / Axe Ø mm	Interasse / Interaxis / Entraxe mm (min/max)	€	Gancio / Hook Crochet 3 - 5 t	Anello / Ring Manille 3,25 t
EURO SAFE 40 *	10W040	65	40	170÷204 - 205÷239 240÷274 - 275÷309 - 310÷350	-	-	-
EURO SAFE 45 *	10W045	80	45	220÷254 - 255÷289 - 290÷324 325÷359 - 360÷400	-	-	-
EURO SAFE 50	10W050	85	50	235÷269 - 270÷304 - 305÷339 340÷380	-	-	-
EURO SAFE 55	10W055	90	55	275÷315	-	-	-
EURO SAFE MIDI 60	10WM60	95	60	275÷315	-	-	-

Coppia perni per aggancio benna compresa / Pair of pins for bucket coupling included / Jeu d'axes pour accrochage godet inclus
Coppia perni supplementare a pg. 57 / Extra pair of pins at pg. 57 / Jeu d'axes supplementaire voir pg. 57



ATTACCO RAPIDO UNIVERSALE EUROSAFE MINI - POWERTILT

EUROSAFE MINI UNIVERSAL QUICK COUPLER - POWERTILT

COUPLEUR EUROSAFE MINI - POWERTILT

REVERSIBLE

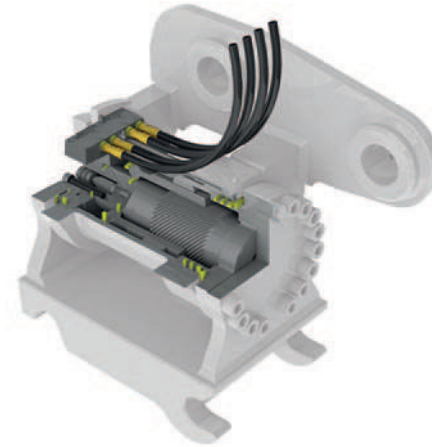
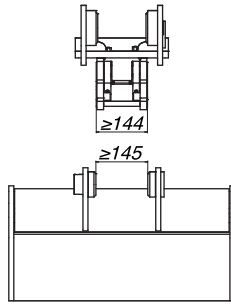






Nota / Note

Specifiche idrauliche
a pg. 288 - 293

Hydraulic specifications
at pg. 288 - 293

Spécifications hydrauliques
voir pg. 288 - 293



Versione idraulica Hydraulic version Version hydraulique	* Solamente per larghezza attacchi benna ≥ 145 mm Only for bucket dipper width ≥ 145 mm Seulement pour largeur attaches godet ≥ 145 mm								
Modello / Model / Modèle	Code	Perno / Pin / Axe Ø mm	Powertilt model	t Max	 Total	 ≈ kg	€	Gancio / Hook Crochet 3 - 5 t	Anello / Ring Manille 3,25 t
EUROSAFE 40 *	10DK40	40	PTA 050	3,0 ÷ 5,0	180°	120	-	-	-
EUROSAFE 40 *	10DY40	40	PTA 070	5,0 ÷ 7,0	180°	150	-	-	-
EUROSAFE 40 *	10DJ40	40	PTA 100	7,0 ÷ 10,0	180°	180	-	-	-
EUROSAFE 45 *	10DK45	45	PTA 050	3,0 ÷ 5,0	180°	135	-	-	-
EUROSAFE 45 *	10DY45	45	PTA 070	5,0 ÷ 7,0	180°	175	-	-	-
EUROSAFE 45 *	10DJ45	45	PTA 100	7,0 ÷ 10,0	180°	205	-	-	-
EUROSAFE 50	10DY50	50	PTA 070	5,0 ÷ 7,0	180°	180	-	-	-
EUROSAFE 50	10DJ50	50	PTA 100	7,0 ÷ 10,0	180°	225	-	-	-
EUROSAFE 50	10DW50	50	PTA 180	10,0 ÷ 18,0	120°	260	-	-	-
EUROSAFE 55	10DJ55	55	PTA 100	7,0 ÷ 10,0	180°	235	-	-	-
EUROSAFE MIDI 60	10DJM6	60	PTA 100	7,0 ÷ 10,0	180°	260	-	-	-
EUROSAFE MIDI 60	10DWM6	60	PTA 180	10,0 ÷ 18,0	120°	290	-	-	-

Coppia perni per aggancio benna compresa / Pair of pins for bucket coupling included / Jeu d'axes pour accrochage godet inclus

Coppia perni supplementare a pg. 57 / Extra pair of pins at pg. 57 / Jeu d'axes supplementaire voir pg. 57

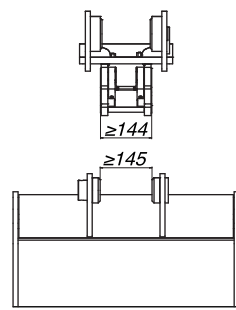
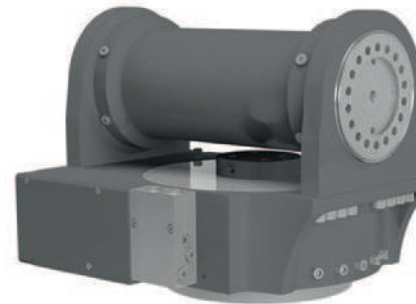
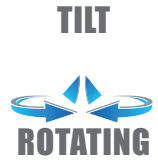


ATTACCO RAPIDO UNIVERSALE EUROSAFE MINI - TILT ROTATOR

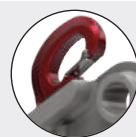



EUROSAFE MINI UNIVERSAL QUICK COUPLER - TILT ROTATOR

COUPLEUR EUROSAFE MINI - TILT ROTATOR

REVERSIBLE



Nota / Note
 Specifiche idrauliche
 a pg. 288 - 293
 Hydraulic specifications
 at pg. 288 - 293
 Spécifications hydrauliques
 voir pg. 288 - 293

Versione idraulica Hydraulic version Version hydraulique		* Solamente per larghezza attacchi benna ≥ 145 mm Only for bucket dipper width ≥ 145 mm Seulement pour largeur attaches godet ≥ 145 mm								
Modello / Model / Modèle	Code	Perno / Pin / Axe Ø mm	Tilt Rotator model	t Max		 Total	≈ kg	€	Gancio / Hook Crochet 3 - 5 t	Anello / Ring Manille 3,25 t
EUROSAFE 40 *	10TD40	40	TR 35	2,4 ÷ 3,5	360°	110°	155	-	-	-
EUROSAFE 40 *	10TF40	40	TR 60	3,0 ÷ 6,0	360°	110°	215	-	-	-
EUROSAFE 45 *	10TF45	45	TR 60	3,0 ÷ 6,0	360°	110°	230	-	-	-
EUROSAFE 45 *	10TH45	45	TR 90	5,0 ÷ 9,0	360°	110°	290	-	-	-
EUROSAFE 50	10TF50	50	TR 60	3,0 ÷ 6,0	360°	110°	235	-	-	-
EUROSAFE 50	10TH50	50	TR 90	5,0 ÷ 9,0	360°	110°	295	-	-	-
EUROSAFE 55	10TH55	55	TR 90	5,0 ÷ 9,0	360°	110°	300	-	-	-
EUROSAFE 55	10TL55	55	TR 120	8,0 ÷ 12,0	360°	110°	330	-	-	-

Coppia perni per aggancio benna compresa / Pair of pins for bucket coupling included / Jeu d'axes pour accrochage godet inclus
 Coppia perni supplementare a pg. 57 / Extra pair of pins at pg. 57 / Jeu d'axes supplementaire voir pg. 57



ATTACCO RAPIDO UNIVERSALE EURO SAFE - VERSIONE IDRAULICA

EURO SAFE UNIVERSAL QUICK COUPLER - HYDRAULIC VERSION

COUPLEUR UNIVERSEL EURO SAFE - VERSION HYDRAULIQUE

REVERSIBLE


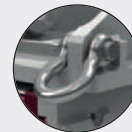


Nota / Note

Specifiche idrauliche a pg. 288 - 293

Hydraulic specifications at pg. 288 - 293

Spécifications hydrauliques voir pg. 288 - 293

Versione idraulica Hydraulic version Version hydraulique								
Modello / Model / Modèle	Code	≈ kg	Perno / Pin / Axe Ø mm	Interasse / Interaxis Entraxe es: mm (min/max)	€	Gancio / Hook / Crochet 5 - 10 t	Anello / Ring / Manille 9,5 t	
EURO SAFE 60 t 11 - 16	10Z060	175	60	330 ÷ 379	-	-	-	
EURO SAFE 65 t 11 - 16	10Z065	180	65	355 ÷ 394 / 395 ÷ 445	-	-	-	
EURO SAFE 70 t 12 - 20	10Z070	270	70	370 ÷ 429 / 430 ÷ 500	-	-	-	
EURO SAFE 80 t 16 - 28	10Z080	320	80	400 ÷ 459 / 460 ÷ 530	-	-	-	
EURO SAFE 90 t 23 - 35	10Z090	400	90	460 ÷ 514 / 515 ÷ 580	-	-	-	
EURO SAFE 100 t 28 - 50	10Z100	640	100	500 ÷ 559 / 560 ÷ 630	-	-	-	
EURO SAFE 110 t 35 - 50	10Z110	730	110	535 ÷ 600	-	-	-	
EURO SAFE 120 t 45 - 75	10Z120	780	120	580 ÷ 645	-	-	-	

Coppia perni per aggancio benna compresa / Pair of pins for bucket coupling included / Jeu d'axes pour accrochage godet inclus



Coppia perni supplementare a pg. 57 / Extra pair of pins at pg. 57 / Jeu d'axes supplementaire voir pg. 57



ATTACCO RAPIDO UNIVERSALE EURO SAFE - VERSIONE MECCANICA
EURO SAFE UNIVERSAL QUICK COUPLER - MECHANICAL VERSION
COUPLEUR UNIVERSEL EURO SAFE - VERSION MÈCANIQUE À VIS

REVERSIBLE



Versione meccanica Mechanical version Version mécanique							
Modello / Model / Modèle	Code	≈ kg	Perno / Pin / Axe Ø mm	Interasse / Interaxis Entraxe es: mm (min/max)	€	Gancio / Hook / Crochet 5 - 10 t	Anello / Ring / Manille 9,5 t
EURO SAFE 60 t 11-16	10W060	175	60	330 ÷ 380	-	-	-
EURO SAFE 65 t 11-16	10W065	180	65	355 ÷ 394 / 395 ÷ 445	-	-	-
EURO SAFE 70 t 12-20	10W070	270	70	370 ÷ 429 / 430 ÷ 500	-	-	-
EURO SAFE 80 t 16-28	10W080	320	80	400 ÷ 459 / 460 ÷ 530	-	-	-
EURO SAFE 90 t 23-35	10W090	400	90	460 ÷ 514 / 515 ÷ 580	-	-	-

Coppia perni per aggancio benna compresa / Pair of pins for bucket coupling included / Jeu d'axes pour accrochage godet inclus
Coppia perni supplementare a pg. 57 / Extra pair of pins at pg. 57 / Jeu d'axes supplementaire voir pg. 57

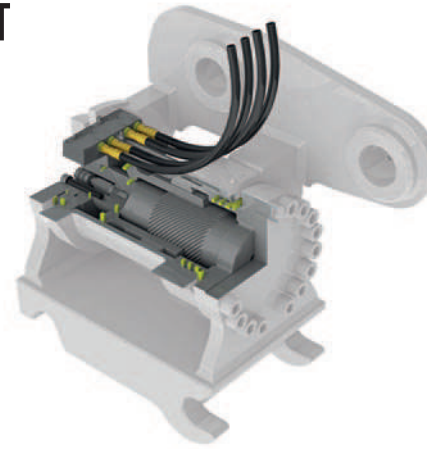


ATTACCO RAPIDO UNIVERSALE EURO SAFE - POWERTILT

EURO SAFE UNIVERSAL QUICK COUPLER - POWERTILT



COUPLEUR UNIVERSEL EURO SAFE - POWERTILT

REVERSIBLE



Nota / Note

Specifiche idrauliche a pg. 288 - 293
 Hydraulic specifications at pg. 288 - 293
 Spécifications hydrauliques voir pg. 288 - 293

Versione idraulica Hydraulic version Version hydraulique									
Modello / Model / Modèle	Code	Perno / Pin / Axe Ø mm	Powertilt model	t Max	Total	≈ kg	€	Gancio / Hook Crochet 5 - 10 t	Anello / Ring Manille 9,5 t
EUROSAFE 60	10DW60	60	PTA 180	11,0 ÷ 18,0	120°	430	-	-	-
EUROSAFE 60	10DZ60	60	PTA 240	18,0 ÷ 24,0	120°	530	-	-	-
EUROSAFE 65	10DW65	65	PTA 180	11,0 ÷ 18,0	120°	435	-	-	-
EUROSAFE 65	10DZ65	65	PTA 240	18,0 ÷ 24,0	120°	535	-	-	-
EUROSAFE 70	10DW70	70	PTA 180	11,0 ÷ 18,0	120°	525	-	-	-
EUROSAFE 70	10DZ70	70	PTA 240	18,0 ÷ 24,0	120°	630	-	-	-
EUROSAFE 70	10DX70	70	PTA 300	24,0 ÷ 32,0	120°	730	-	-	-
EUROSAFE 80	10DW80	80	PTA 180	11,0 ÷ 18,0	120°	580	-	-	-
EUROSAFE 80	10DZ80	80	PTA 240	18,0 ÷ 24,0	120°	680	-	-	-
EUROSAFE 80	10DX80	80	PTA 300	24,0 ÷ 32,0	120°	780	-	-	-
EUROSAFE 90	10DZ90	90	PTA 240	18,0 ÷ 24,0	120°	760	-	-	-
EUROSAFE 90	10DX90	90	PTA 300	24,0 ÷ 32,0	120°	860	-	-	-
EUROSAFE 99	10DX99	100	PTA 300	24,0 ÷ 32,0	120°	1140	-	-	-

Coppia perni per aggancio benna compresa / Pair of pins for bucket coupling included / Jeu d'axes pour accrochage godet inclus
 Coppia perni supplementare a pg. 57 / Extra pair of pins at pg. 57 / Jeu d'axes supplementaire voir pg. 57



ATTACCO RAPIDO EUROSAFE SW-LIEBHERR

EUROSAFE SW-LIEBHERR QUICK COUPLING

ATTACHE RAPIDE EUROSAFE SW-LIEBHERR





Nota / Note

Specifiche idrauliche a pg. 288 - 293


Hydraulic specifications at pg. 288 - 293

Spécifications hydrauliques voir pg. 288 - 293

Versione meccanica Mechanical version Version mécanique						
Modello / Model / Modèle	Code	Perno / Pin / Axe Ø mm	≈ kg	€	Gancio / Hook / Crochet	
EURO SAFE SW 33	10W060LIA1	60	210	-	t 5,0	-
EURO SAFE SW 48	10W070LIA2	70	320	-	t 10,0	-

Versione idraulica Hydraulic version Version hydraulique						
Modello / Model / Modèle	Code	Perno / Pin / Axe Ø mm	≈ kg	€	Gancio / Hook / Crochet	
EURO SAFE SW 33	10Z060LIA1	60	210	-	t 5,0	-
EURO SAFE SW 48	10Z070LIA2	70	320	-	t 10,0	-
EURO SAFE SW 66	10Z080LIA3	80	550	-	t 12,5	-

1 perno per aggancio benna compreso / 1 pin for bucket coupling included / 1 axe pour accrochage godet inclus

Perno supplementare Extra pin Axe supplémentaire		Ø 60 mm	Ø 70 mm	Ø 80 mm
		-	-	-



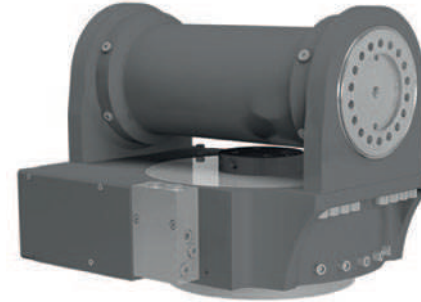
ATTACCO RAPIDO UNIVERSALE EURO SAFE - TILT ROTATOR

EURO SAFE UNIVERSAL QUICK COUPLER - TILT ROTATOR

COUPLEUR EURO SAFE - TILT ROTATOR








TILT



Nota / Note

Specifiche idrauliche a pg. 288 - 293
 Hydraulic specifications at pg. 288 - 293
 Spécifications hydrauliques voir pg. 288 - 293

Versione idraulica Hydraulic version Version hydraulique										
	Code	Perno/Pin/Axe Ø mm	Tilt Rotator model	t Max		 Total	 ≈ kg	€	Gancio/Hook Crochet 5 - 10 t	Anello/Ring Manille 9,5 t
EUROSAFE 60	10TL60	60	TR 120	8,0 ÷ 12,0	360°	110°	440	-	-	-
EUROSAFE 60	10TN60	60	TR 150	11,0 ÷ 15,0	360°	110°	520	-	-	-
EUROSAFE 65	10TL65	65	TR 120	8,0 ÷ 12,0	360°	110°	455	-	-	-
EUROSAFE 65	10TN65	65	TR 150	11,0 ÷ 15,0	360°	110°	535	-	-	-
EUROSAFE 70	10TN70	70	TR 150	11,0 ÷ 15,0	360°	110°	620	-	-	-
EUROSAFE 70	10TP70	70	TR 200	14,0 ÷ 20,0	360°	110°	645	-	-	-
EUROSAFE 70	10TR70	70	TR 270	19,0 ÷ 27,0	360°	110°	825	-	-	-
EUROSAFE 80	10TP80	80	TR 200	14,0 ÷ 20,0	360°	110°	659	-	-	-
EUROSAFE 80	10TR80	80	TR 270	19,0 ÷ 27,0	360°	110°	875	-	-	-
EUROSAFE 90	10TR90	90	TR 270	19,0 ÷ 27,0	360°	110°	955	-	-	-

Coppia perni per aggancio benna compresa / Pair of pins for bucket coupling included / Jeu d'axes pour accrochage godet inclus
 Coppia perni supplementare a pg. 57 / Extra pair of pins at pg. 57 / Jeu d'axes supplementaire voir pg. 57